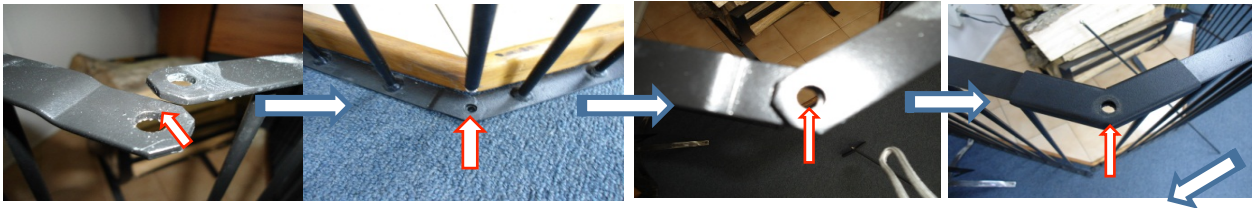


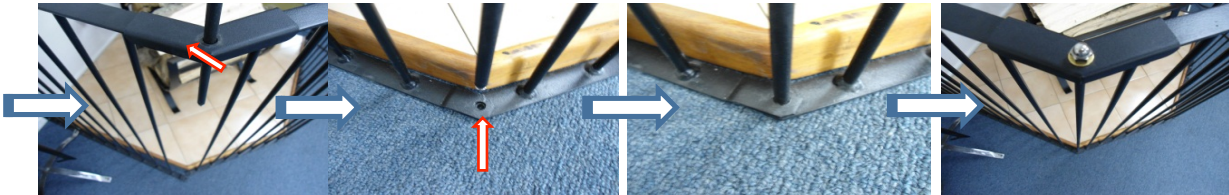
# SUPERGUARD INSTALLATION INSTRUCTIONS



- 1) Attach the side panels to the front panel to achieve the shape of guard required for your installation.
- 2) Line up the side panel with the front panel, you will notice the holes for the threaded rod. The small *threaded* hole on the guard goes on the floor.
- 3) Place the corner brackets on the overlapping corners of the guard



- 4) Slide the threaded rod down through the holes in the top of the guard, down to the bottom and screw in



- 5) Repeat with each panel. Screw the 'L' -hooks into the top hole of the part of the panel going against the wall. Turn it through the guard and then lock it with the M6 nut provided and put the black plastic cap over the nut.



- 6) Mark on the wall where the 'L' shaped hook touches the wall.
- 7) Screw the Gib fastner (or the crome screw eye for solid walls) into the wall.
- 8) Drop the 'L' shaped hook into the hole of the flat eye screw.

